

ACCELERATING DIGITAL TRANSFORMATION



digital transformation noun

dig·i·tal trans·for·ma·tion | \ di-je-tel trans-for-mā-shen

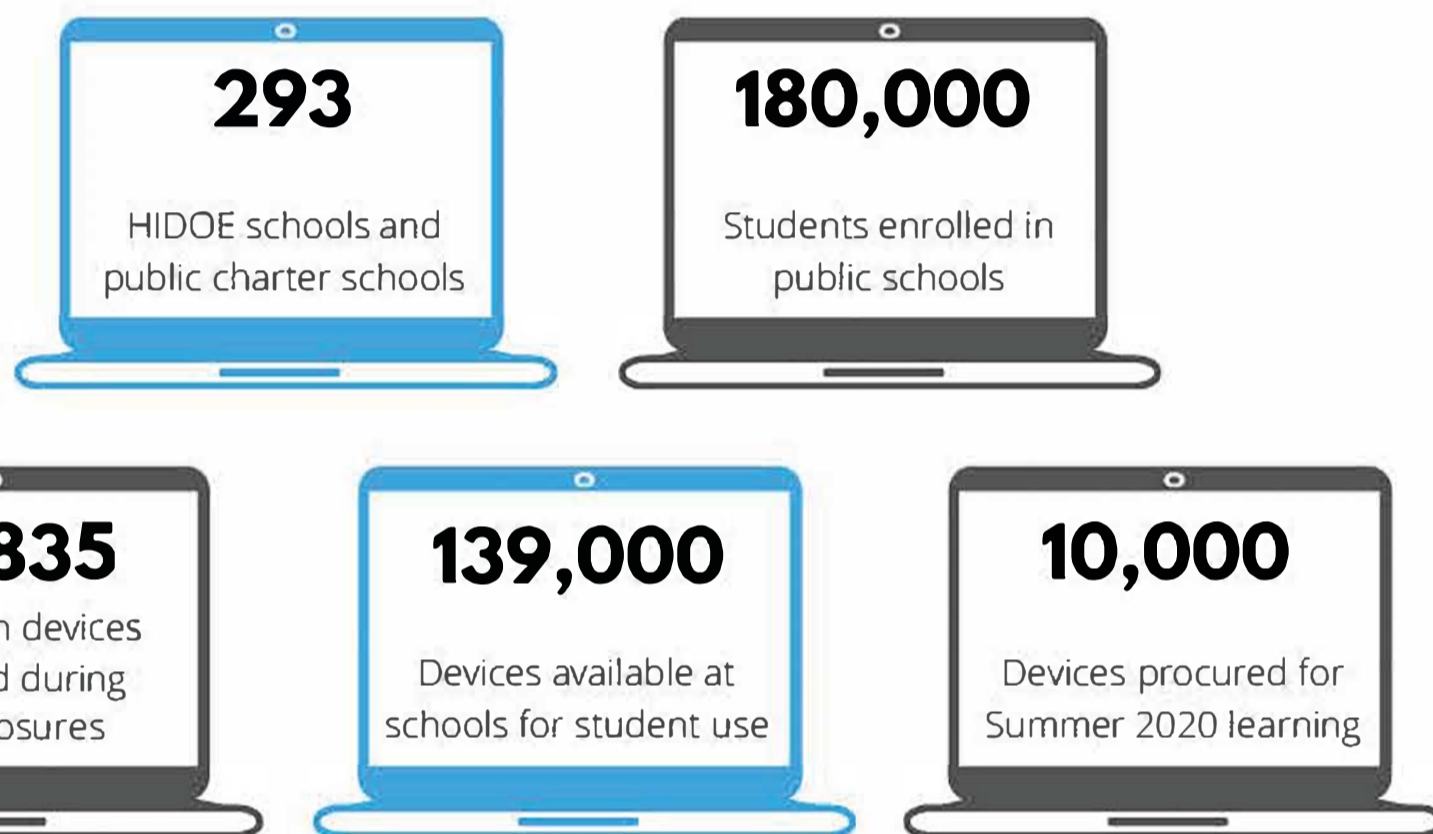
The invention and implementation of a new way of working, leveraging the capabilities of pervasive new technology such as automation, machine learning, agility and ubiquitous access.

MOVING SCHOOLS INTO THE FUTURE

The COVID-19 pandemic highlighted areas for improvement within our public schools while also creating the conditions to embrace innovation and empowerment faster. Schools have the opportunity to accelerate digital transformation to best serve all students, recognizing that distance learning is not a one-size-fits-all solution.

The acceleration of our digital transformation enables more individualized experiences for students while also allowing us to be more resilient in the face of COVID-related changes. Schools will open up new, equitable opportunities for learning and new ways for the Department to better address existing equity challenges.

BY THE NUMBERS



Right now, access to devices in school and at home varies from school to school, and connectivity varies from community to community.

The Department is conducting distance-learning surveys of teachers, secondary students, and parents to capture data around device and internet access, preferences for distance versus in-person learning, support needed and more. The surveys will help the Department make key decisions about technology investments and instruction delivery.

DIGITAL SUPPORT IN PROGRESS

Work is underway to accelerate digital transformation.



'OHANA HELP DESK

Technical support for families and educators is necessary as we transition to utilizing more technology-based curriculum.



LEARNING MANAGEMENT APPLICATIONS

Learning management applications (e.g., Google Classroom, WebEx, Blackboard) allow teachers to communicate with students and families, create and collect assignments, and manage the everyday functions of teaching in an online or blended learning environment.



DIGITAL CURRICULUM

Content for online delivery differs from the face-to-face setting. Having curriculum readily available for online delivery modeled by the established E-School online learning program is imperative for successful implementation.



CREDIT-RECOVERY

Credit recovery ensures students remain on track for learning. Falling behind in any area is detrimental to the overall success of a student.



DIGITAL LEARNING HUBS

Digital learning hubs are a mobile approach to take learning and supports into communities.

ON THE BACK:
LEARN HOW YOU CAN HELP



WE NEED YOUR KOKUA

The HIDEOE is the largest producer of talent in the state, preparing the next generation for college, career and community. Invest today in tomorrow's leaders by providing Hawaii's public school students with the tools they need to be competitive in your market.

DESIGN-BASED LEARNING EXPERIENCES

Digital transformation along with industry partnerships will provide students with relevant, design-based learning experiences, with outcomes aligned to the five student promises in the 2030 Promise Plan – Hawaii, Equity, School Design, Empowerment and Innovation.



Hands-on experiences. ✓ ✓ ✓ ✓ ✓

International exchange partnerships. ✓ ✓ ✓ ✓ ✓

Incubators for learning, for kokua, for teaching others. ✓ ✓ ✓ ✓ ✓

Project-, product-, problem-based opportunities provided by community partners. ✓ ✓ ✓ ✓ ✓

HOW YOU CAN HELP



TO GET INVOLVED, CONTACT:

Camille Masutomi for
 Superintendent Dr. Christina Kishimoto
 (808) 784-6165 | digitaltransformation@k12.hi.us

DIGITAL TRANSFORMATION COST ITEMS



DEVICES

\$5,457,591 – Emergency device purchases
 \$1,771,280 – Management solution
 \$41,231,500 – Guaranteed device access for Title I students



CONNECTIVITY

\$2,891,097 – MiFi and mobile hubs
 \$1,800,000 – Network expansion



TRAINING/SUPPORT

\$1,500,000 – 'Ohana Help Desk/Parent training
 \$3,200,000 – Distance learning platform expansion



TOTAL EQUITY INVESTMENT

\$57.8 million

*Estimate as of June 2020